

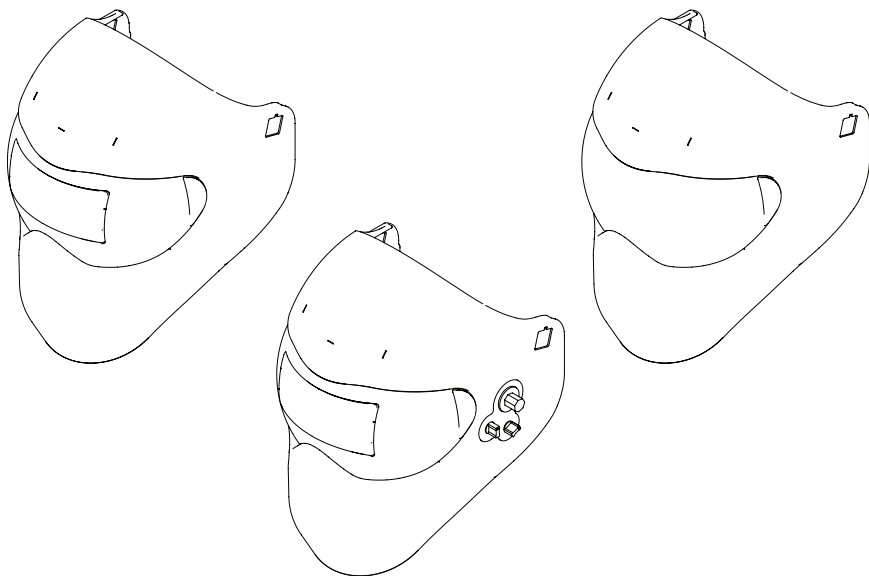


The World Leader in Phace Protection!

Adjustable Extreme Face Protector Owners Guide

Model

Gen X, Gen Y, Elementary



This is the safety alert symbol. It is used to alert you to potential personal injury hazards. Obey all safety messages that follow this symbol to avoid possible injury or death.

Mask, Lens Care, Lens Replacement and Headgear Assembly Instructions

NOTICE:

For your SAFETY - PLEASE read and follow all of these instructions exactly. If you have problems understanding these instructions or have questions, please call 1-866-783-3223.

Caution! Read and follow these instructions EXACTLY for care and cleaning of the lenses. These lenses are made from the highest quality polycarbonate known to man WITH a Military Grade Anti Scratch Coating AND the World's BEST Anti Fog Coating on the inside.

Remember, there is NO SUCH thing as a permanent Anti Fog coating. ALL anti fog coatings eventually come off. If you clean the lenses improperly, you'll increase the rate of deterioration or possibly wipe off the coatings. So, PLEASE follow these instructions every time you clean the non-ADF lens.



WARNING

SAFETY AND GENERAL INFORMATION

- Failure to comply with the enclosed may result in injury or blindness.
- **WARNING:** Risk of Ultraviolet Rays. Flying Particles. Wear Safety Goggles (User and Bystanders).
- Materials which come into contact with the wearer's skin could possibly cause allergic reactions to susceptible individuals.
- Scratched or damaged oculars (lenses) should be replaced.
- This is not a Paintball mask! It is a welding helmet.
- Toughened mineral filter oculars shall only be used in conjunction with a suitable backing ocular.

EFP MASK and LENS CARE INSTRUCTIONS (NON ADF)

1. NEVER use Windex®, 409® or any cleaner that has alcohol or ammonia in it to clean your lens. Most lens cleaners have ammonia or alcohol that will deteriorate the lens coatings and/or lens material and may cause the lens to weaken. If your lens comes in contact with one of these, throw it away and order a new replacement lens.
2. Clean your lens often.
3. Use warm clean water and a Micro fiber Lens Cloth Bag or lint free cotton cloth to clean the lens.
4. Never store your lenses or mask near chemicals or fumes.
5. Never store your lenses or mask in hot places or near heat sources. i.e.; in the trunk of your car, plastic bags, direct sun light. Always store in cool dry places.
6. Disinfect your EFP Helmet by rubbing a disinfectant cloth on all inside surfaces of the EFP.

EFP LENS INSTALLATION and REPLACEMENT

- There are 4 Parts to the Lens Locking System; these are called Lens Anchors and Lens Keys. Each piece is marked with an "R" and "L".
- If you do not install the Lens Anchors & Lens Keys correctly DO NOT Use the Mask.
- Press the lens firmly into the mask and install the Lens Locking Anchor that is marked "R" installed on the Right side. Repeat on Left side.

INSTALLATION and REMOVAL

1. Insert the lens.
2. From the outside, install Lens Anchors, from the inside insert Lens Key through the Lens Anchor until the Lens Key snaps into place. Reverse order of above to remove.

MASK FIT INSTRUCTIONS

9 Point High Quality Halo with 3 Adjustments Locations.

- For the top of the head adjustment; make the adjustment by aligning the strap to its proper place depending on the size of your head.
- For the mask to fit tight PUSH IN and TURN the rear adjustment wheel on the back of the head gear.
- FOR FORWARD AND AFT ADJUSTMENTS - Loosen the headgear outer locking nuts and realign the headgear screws to the proper slots located INSIDE the EFP.

LENS CARE, INSTALLATION and REMOVAL INSTRUCTIONS (ADF LENS)

To Clean: Remove ADF Filter from ADF Lens holder by removing the 4 screws off the back ADF cover plate.

- Clean ADF Lens Holder with water only. Rinse ADF Lens holder under running water, shake off residue and dry off with a Micro Fiber or lint free soft cloth.

INSTALLATION and REMOVAL of ADF, FRONT PROTECTIVE CLEAR COVER LENS and REAR ADF PROTECTIVE COVER LENS

1. Remove the four finger screws and remove the REAR ADF Holder Plate to the Outer Lens.
2. Take out the old ADF Lens
3. When you replace the clear protective outer ADF Lens cover, squeeze the two tabs on the inside and press outward. The clear protective lens will pop out of the Outer Lens. Gently snap in a new one.
4. Replace the old ADF Filter with a new ADF that matches the ADF Holder Lens Shade as shown on the outside of the ADF Holder Lens.
5. Place the new ADF Filter with the Solar Panels facing the welding arc.
6. Place the rear ADF Holder over the ADF and install finger screws.
7. Do NOT over tighten finger screws.

INSTALLATION an/or REPLACEMENT OF ADF COMPLETE ASSEMBLY

To remove the old ADF Complete Assembly:

1. Remove the 4 finger screws from the back of the ADF Complete Assembly.
2. Remove the back cover plate and spacer with gasket.
3. Remove rear clear protective ADF cover lens.
4. Remove ADF(for Gen Y models the Adjuster will need to be removed).
5. Uninstall the old ADF Complete Assembly by removing the lens keys and Lens Anchors.

To install the New ADF Complete Assembly:

1. Install new ADF Holder Lens and install Lens Anchors and Lens Keys.
2. Install ADF into the ADF Holder Lens.
3. Install Spacer with gasket and rear clear protective ADF cover lens.
4. Install the back cover plate with 4 finger screws.

USING the ADJUSTABLE ADF

Our advanced optical detection system monitors your welding process to ensure that your filter remains in the dark state in a wide range of arc-welding applications. Protection from harmful ultra-violet / infrared radiation is always present whether in the light or dark state. Your new filter energizes automatically as soon as the arc is struck. All models are solar powered so there are no on / off switches.

There are 2 NON RECHARGEABLE lithium batteries that need to be replaced every six months to one year (depending on usage). Please replace both batteries with two 3V - CR2450 batteries and dispose of old batteries properly (preferably at a battery recycle location). There are no alkaline batteries to change and no corrosion caused by leaky batteries.

Recommended Welding Application (Table 1)

Welding Application	“Heads Up” Display as seen by user	
SMAC, MIG, TIG, 40 amps and above	Delay	9, 10, 11, or 12
SMAC, MIG, TIG, 30 amps and above	Delay TIG	9, 10, 11, or 12
Spot welding, 40 amps and above		9, 10, 11, or 12
Spot welding, 30 amps and above	TIG	9, 10, 11, or 12

Note: The above settings are meant to illustrate which welding applications are suggested for each configurable mode. Applications vary greatly so please experiment with the many available setting combinations in order to find the best combination of shade level, sensitivity and delay for your personal comfort and performance efficiency.

SELECTING the SHADING LEVEL (SHADE CONTROL KNOB)

The shading level can be set manually from 9 - 13. Consult the table of hints on shading for the correct shading level for your work. Select a shading level by turning the shading dial until the arrow is pointing at the level you require (see table with hints on shading).

SETTING the DELAY/SWITCHING TIME (DELAY CONTROL KNOB)

The delay/switching time (this means at that moment at which welding begins, the filter changes from light to dark) is set using the rotary knob. In the case of the “short” setting this is approx. 1/20000 of a second, “long” is approx. 0.6 of a second.

SETTING the SENSITIVITY (SENSITIVITY CONTROL KNOB)

The rotary knob can be used to adjust the sensitivity to suit the welding process.

GRIND MODE ADJUSTMENT (GRIND CONTROL KNOB)

Turn the sensitivity knob located on the outside of the helmet clockwise to the lowest setting. Then turn left on small rotary knob for grind mode.

MORE INFORMATION

- This information is intended for ALL Save Phace EFP 1 (Extreme Face Protector) models.
- This EFP is intended as a Welding Helmet and Grinding Mask as per ANSI and CE standards for low impact protectors.
- All parts on the EFP are replaceable. Please contact your local Save Phace Retailer/Distributor for these parts.
- For accessories, including magnification lenses and other cool accessories, please contact your local Save Phace Retailer/Distributor or log onto www.SavePhace.com
- All Save Phace ADF lenses have a 2 year warranty. You must register your product to obtain warranted replacement products.
- If you take care of this EFP it should last you a lifetime!
- CE EN 175:1997 –F means this product passed all of the requirements as stated by the European Counsel. The CE EN 175:1997 means this particular EN 175 was adopted in 1997. The –F means it passed the low impact standards.
- When transporting your product we recommend placing it in a nice Helmet Bag that comes with your purchase.
- Replacement parts on the EFP are recommended when broken, damaged or cracked. Otherwise, replace the EFP lenses are recommended once per year.
- This Product meets or exceeds ANSI Z87.1 Standards.
- This Product meets or exceeds CSA Standards.

NOTES

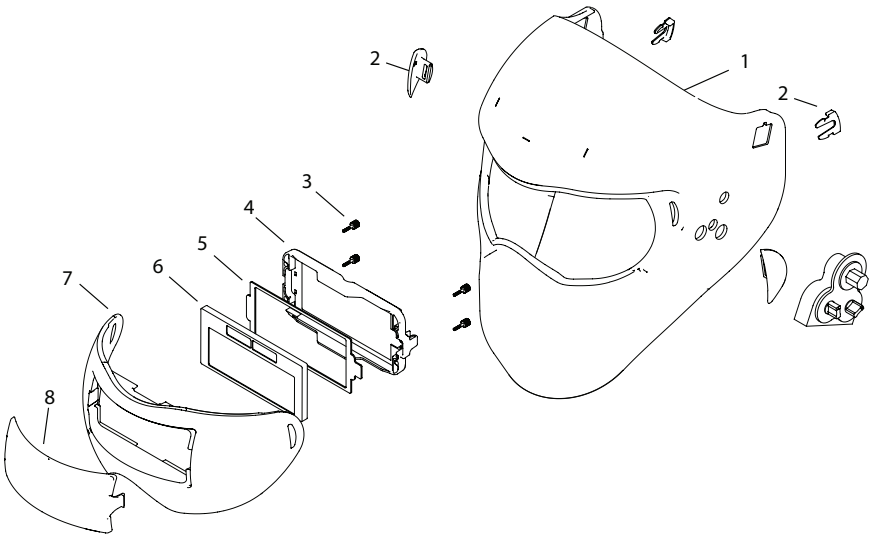
- When not using your EFP or EFP ADF lens, we recommend keeping them in a bag away from harmful chemicals or extreme heat.
- DO NOT USE ANY lens Cleaner, Windex®, Alcohol or Gasoline. Use of any of these or similar products will damage the coatings and lens.
- ALWAYS use OSHA/CE approved safety glasses when welding.

REPLACEMENT PARTS

Not all components are replacement items, but are illustrated as a convenient reference of location and position in the assembly sequence. When ordering parts, please give the Model number and parts description. Call or write for current pricing:

SFA Companies 10939 N. Pomona Ave. Kansas City, MO 64153, U.S.A.

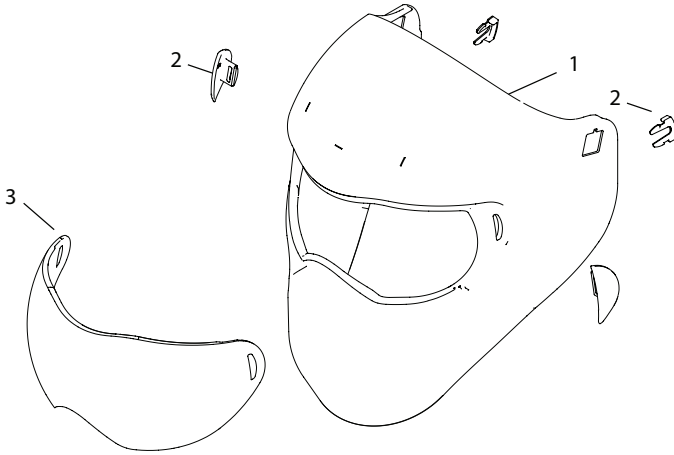
E-Mail: savephacesupport@sfacompanies.com Tel: (866) 783-3223 Fax: (816) 891-6599



Item	Part Number		Description	Qty.
	Gen X	Gen Y		
1	N/A		Mask	1
2	3010219		Lens Key and Anchor (Left & Right)	2
3	3010110		Screw	4
4	3010103	3010998	Back Cover	1
5	3010127		Protective Inside Lens	1
6	3010028	3010936	ADF	1
7	3010080		ADF Holder	1
8	3010097		Protective Lens	1
9	3011544		Halo (Not Shown)	1

REPLACEMENT PARTS CONT'D

Parts for Elementary Mask Below



Item	Part Number	Description	Qty.
1	N/A	Mask	1
2	3010219	Lens Key and Anchor (Left & Right)	2
3	3010134	Protective Lens	1
4	3011544	Halo (Not Shown)	1



ANSI Z87.1 2010
 CE EN175:1997 and CE EN:166
 EFP Helmet Markings:
 Z87 CE EN 175 -F W
 EFP Lens Markings:
 Z87 #10 SP 1 -F CE
 Created, Engineered, Designed &
 Shipped in USA
 Made in China and Taiwan

This product meets or exceeds ANSI Z87.1, CE EN175:1997, CE EN:166 and CSA Standards.

Auto Adjustable Specs:
 ADF SIZE (mm) – 108x51x8
 VIEWING AREA (mm) – 95x35
 (At length products)
 ARC SENSORS – 2
 LIGHT STATE – SHADE 4
 SHADES – SHADE 9-13
 SENSITIVITY Exterior Adjusted – YES
 DELAY Exterior ADJUSTED – YES
 POWER ON/OFF – FULLY AUTOMATIC
 POWER SUPPLY – SOLAR CELLS +
 LILON BATTERY
 SWITCHING TIME (ms) – .23ms
 GRINDING – NO
 WEIGHT (oz) – 17oz
 CERTIFICATION – No CE
 OPERATING TEMPERATURE – -5 TO +55° C
 LOW AMP TIG RATING - > 15 AMPS

ONE YEAR LIMITED WARRANTY

SavePhace products undergo a strict quality control inspection for workmanship, function, and safety before leaving the factory. From the date of purchase, **SavePhace** will warranty or repair its products for: one (1) year on its helmet and two (2) years on its ADF against defects in parts and workmanship. We have a general warranty claim form along with potential request of proof of purchase.

In the unlikely event a problem is experienced with any of our products, a return merchandise authorization (RMA) number must be obtained by contacting us toll-free at 866-783-3223. Each product to be returned must have the item number, description of the problem and proof of purchase. All returns must have a RMA number marked clearly on the outside of the shipping box, and printed RMA form enclosed inside the box. Only SavePhace can determine if product can be repaired or must be replaced.

Except where such limitations and exclusions are specifically prohibited by applicable law, (1) THE CONSUMER'S SOLE AND EXCLUSIVE REMEDY SHALL BE THE REPAIR OR REPLACEMENT OF DEFECTIVE PRODUCTS AS DESCRIBED ABOVE. (2) **SavePhace**. SHALL NOT BE LIABLE FOR ANY CONSEQUENTIAL OR INCIDENTAL DAMAGE OR LOSS WHATSOEVER. (3) ANY IMPLIED WARRANTIES, INCLUDING WITHOUT LIMITATION THE IMPLIED WARRANTIES OF MERCHANTABILITY AND FITNESS FOR A PARTICULAR PURPOSE, SHALL BE LIMITED TO ONE YEAR, OTHERWISE THE REPAIR, REPLACEMENT OR REFUND AS PROVIDED UNDER THIS EXPRESS LIMITED WARRANTY IS THE EXCLUSIVE REMEDY OF THE CONSUMER, AND IS PROVIDED IN LIEU OF ALL OTHER WARRANTIES, EXPRESS OR IMPLIED. (4) ANY MODIFICATION, ALTERATION, ABUSE, UNAUTHORIZED SERVICE OR ORNAMENTAL DESIGN VOIDS THIS WARRANTY AND IS NOT COVERED BY THIS WARRANTY.

Some states do not allow limitations on how long an implied warranty lasts, so the above limitation may not apply to you. Some states do not allow the exclusion or limitation of incidental or consequential damages, so the above limitation or exclusion may not apply to you. This warranty gives you specific legal rights, and you may also have other rights, which vary from state to state.
