

# OMEGA PRO

## 5 pc. 1/2" Drive Preset Torque Wrench Set

Model

83012



SFA Companies

Read this manual and follow all the Safety Rules and Operating Instructions before using this product.

© Sept. 2015

Printed in Taiwan  
83012-M1\_092015

## SAFETY AND GENERAL INFORMATION

**Save these instructions.** For your safety, read, understand, and follow the information provided with and on this device before using. The owner and/or operator shall have an understanding of the device, its operating characteristics and safety operating instructions before operating the equipment. The owner and/or operator shall be aware that use and repair of this product may require special skills and knowledge. Instructions and safety information shall be read to and discussed with the operator in the operator's native language, making sure that the operator comprehends their contents, before use of this equipment is authorized. If any doubt exists as to the safe and proper use of this device, remove from service immediately.

**Inspect before each use.** Do not use if abnormal conditions such as cracked welds, damaged, loose or missing parts are noted. Any equipment that appears damaged in any way, is found to be worn, or operates abnormally shall be removed from service until repaired. If the equipment has been or is suspected to have been subjected to an abnormal load or shock, immediately discontinue use until inspected by a factory authorized repair facility (contact distributor or manufacturer for list of authorized repair facilities). It is recommended that an annual inspection be made by an authorized repair facility. Labels and Operator's Manuals are available from the manufacturer.

## Product Description

The 83012 is a 5 piece click torque wrench set preset to the most common torque settings. They are color coded and come in a blow molded storage case.

## Specifications

Color	Torque Setting
Yellow	65 ft.-lbs.
Blue	80 ft.-lbs.
White	100 ft.lbs.
Grey	120 ft.lbs.
Orange	140 ft.-lbs.

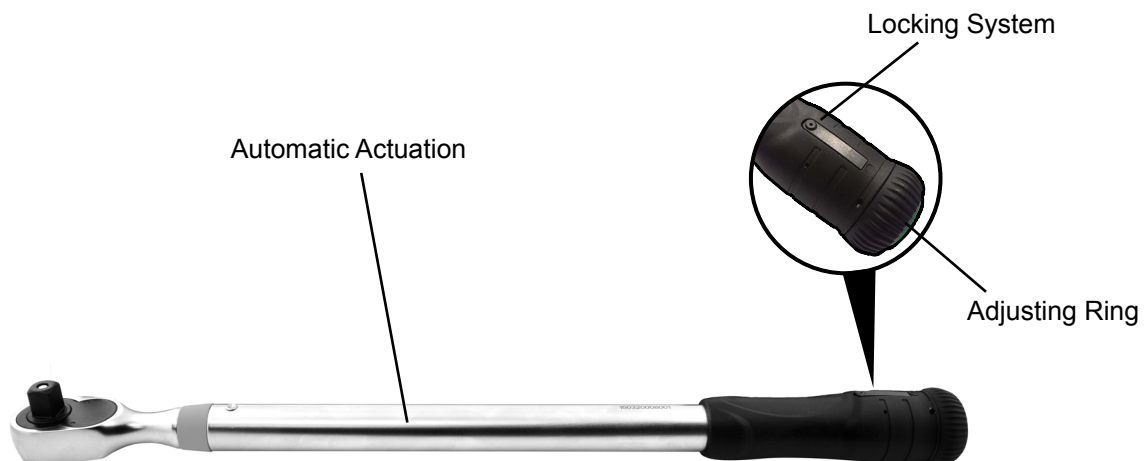
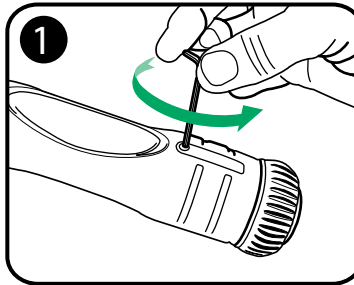


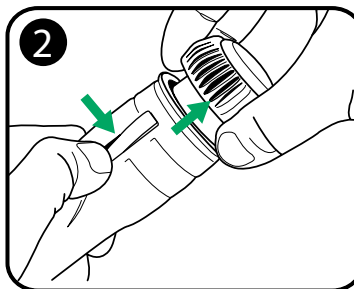
Figure 1. Torque Wrench Nomenclature.

## Recalibration Procedure

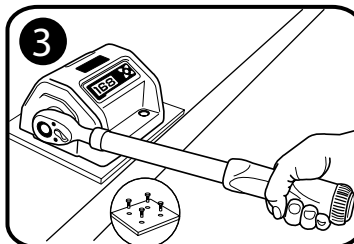
The availability of a once-off calibrated torque wrench is not enough in order to guarantee its precision after multiples uses or over long periods of time. Therefore, torque wrenches require regular servicing with a test device for examination and fine-tuning. Make sure your test device is calibrated, and the operator has the required knowledge to set the torque.



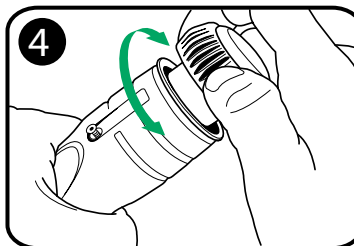
1. Loosen the screw of the locking system on plastic handle.



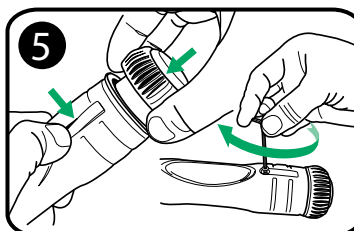
2. Press the screw of the locking system, in the meanwhile, pull out the adjusting knob.



3. Set the torque wrench on the calibration equipment and get the torque values.



4. Do fine tuning by rotating the knob.



5. After finishing the adjustment, push back the knob. Make sure to tighten the screw on the locking system.

## ONE YEAR LIMITED WARRANTY

For a period of one (1) year from date of purchase, **SFA COMPANIES, INC.** will repair or replace, at its option, without charge, any of its products which fails due to a defect in material or workmanship under normal usage. This limited warranty is a consumer's exclusive remedy.

Performance of any obligation under this warranty may be obtained by returning the warranted product, freight prepaid, to **SFA COMPANIES, INC.** Warranty Service Department, 10939 N. Pomona Ave., Kansas City, MO 64153.

Except where such limitations and exclusions are specifically prohibited by applicable law, (1) THE CONSUMER'S SOLE AND EXCLUSIVE REMEDY SHALL BE THE REPAIR OR REPLACEMENT OF DEFECTIVE PRODUCTS AS DESCRIBED ABOVE. (2) **SFA COMPANIES, INC.** SHALL NOT BE LIABLE FOR ANY CONSEQUENTIAL OR INCIDENTAL DAMAGE OR LOSS WHATSOEVER. (3) ANY IMPLIED WARRANTIES, INCLUDING WITHOUT LIMITATION THE IMPLIED WARRANTIES OF MERCHANTABILITY AND FITNESS FOR A PARTICULAR PURPOSE, SHALL BE LIMITED TO ONE YEAR, OTHERWISE THE REPAIR, REPLACEMENT OR REFUND AS PROVIDED UNDER THIS EXPRESS LIMITED WARRANTY IS THE EXCLUSIVE REMEDY OF THE CONSUMER, AND IS PROVIDED IN LIEU OF ALL OTHER WARRANTIES, EXPRESS OR IMPLIED. (4) ANY MODIFICATION, ALTERATION, ABUSE, UNAUTHORIZED SERVICE OR ORNAMENTAL DESIGN VOIDS THIS WARRANTY AND IS NOT COVERED BY THIS WARRANTY.

Some states do not allow limitations on how long an implied warranty lasts, so the above limitation may not apply to you. Some states do not allow the exclusion or limitation of incidental or consequential damages, so the above limitation or exclusion may not apply to you. This warranty gives you specific legal rights, and you may also have other rights, which vary from state to state.

---

**OMEGA PRO**

SFA Companies  
10939 N. Pomona Ave. Kansas City, MO 64153  
888-332-6419